

# Impact Assessment, Evaluation and Monitoring of Research Infrastructures – the ESS ERIC

**Professor Rory Fitzgerald**

Director, European Social Survey ERIC

16 December 2020



**[europeansocialsurvey.org](https://europeansocialsurvey.org)**

ESS is a European Research Infrastructure Consortium (ESS ERIC)

## European Social Survey: Overview

- **Academic cross-national survey**  
Measuring attitudes and behaviour
- **9 rounds completed**  
Every two years since 2002/03 -  
in 38 participating countries
- **Face-to-face interviews**  
The questionnaire lasts one-hour and  
has been translated into 50 languages
- **Over 425,000 interviews completed**  
Data collection by a range of providers
- **Round 10 preparations have begun**  
Fieldwork period extended due to  
COVID-19 impact on face-to-face  
interviews
- **All data free for non-commercial use**  
The data is available to analyse on our  
website or downloadable in a range of  
file formats for use in statistical  
software programmes
- **Latest dataset: Round 9 (2018/19)**  
Edition 3.0 published last week  
includes data for 29 countries (and  
post-stratification weights)

## Participating countries

### 9 ROUNDS 5 ROUNDS

- |            |              |
|------------|--------------|
| 1. Belgium | 23. Bulgaria |
| 2. Finland | 24. Cyprus   |
| 3. France  | 25. Italy    |
| 4. Germany | 26. Russia   |
| 5. Hungary | 27. Ukraine  |

- |                    |
|--------------------|
| 6. Ireland         |
| 7. The Netherlands |
| 8. Norway          |
| 9. Poland          |
| 10. Portugal       |
| 11. Slovenia       |
| 12. Spain          |
| 13. Sweden         |
| 14. Switzerland    |
| 15. United Kingdom |

### 4 ROUNDS

- |             |
|-------------|
| 28. Greece  |
| 29. Iceland |
| 30. Latvia  |

### 3 ROUNDS

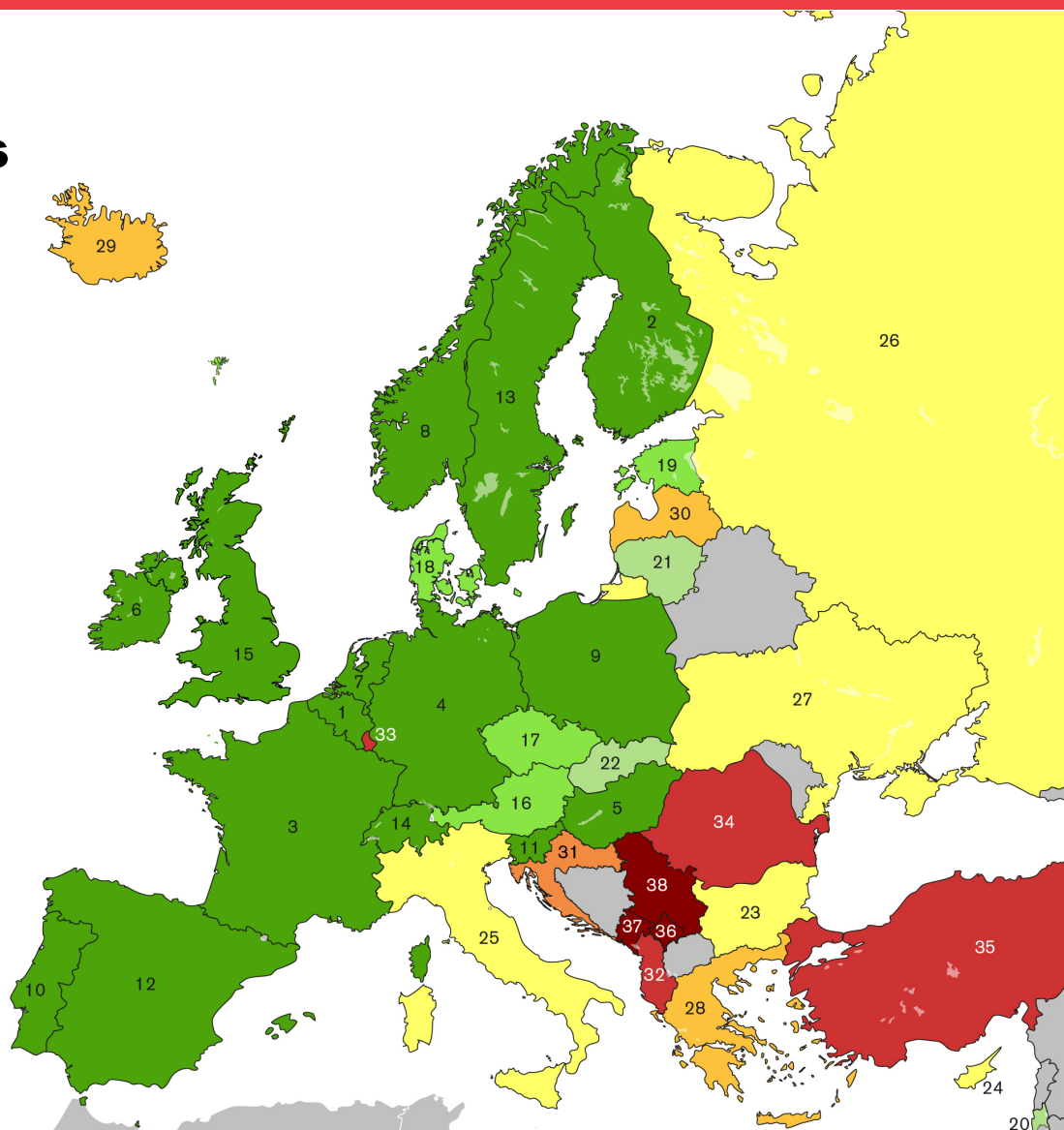
- |             |
|-------------|
| 31. Croatia |
|-------------|

### 8 ROUNDS 2 ROUNDS

- |                    |                |
|--------------------|----------------|
| 16. Austria        | 32. Albania    |
| 17. Czech Republic | 33. Luxembourg |
| 18. Denmark        | 34. Romania    |
| 19. Estonia        | 35. Turkey     |

### 6 ROUNDS 1 ROUND

- |               |                |
|---------------|----------------|
| 20. Israel    | 36. Kosovo     |
| 21. Lithuania | 37. Montenegro |
| 22. Slovakia  | 38. Serbia     |

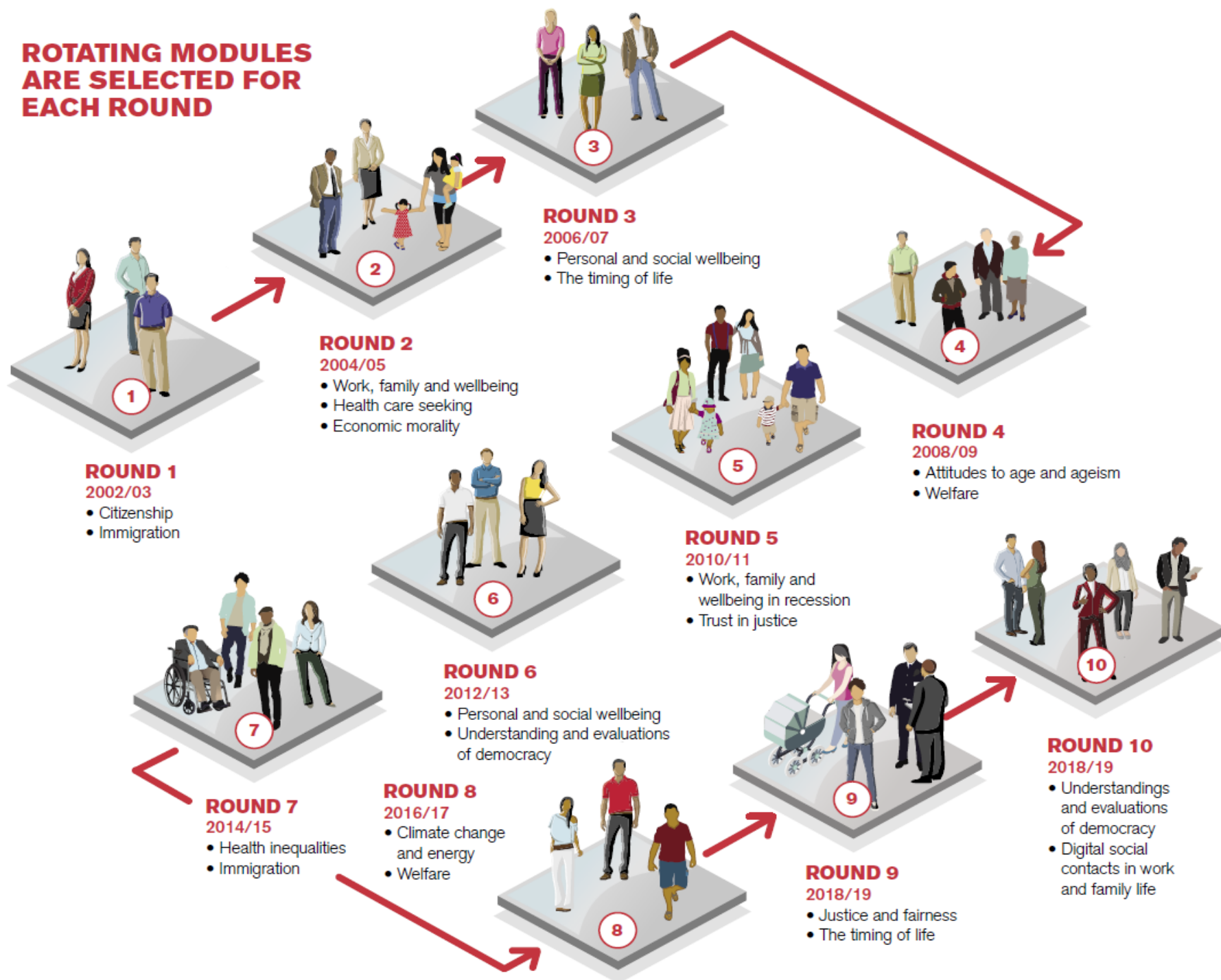


## Questionnaire

- **Media use; Internet use; social trust**  
*6 questions*
- **Political interest, trust in others / institutions, electoral and other forms of participation, party allegiance, socio-political orientations, immigration**  
*43 questions*
- **Subjective wellbeing, social exclusion, crime, religion, perceived discrimination, national and ethnic identity, vote intention in EU referendum**  
*35 questions*
- **Socio-demographic profile, including: household composition, sex, age, marital status, type of area, education & occupation of respondent, partner, parents, union membership, income and ancestry**  
*35 questions*
- **Human Values Scale**  
*21 questions*
- **Rotating modules**  
*Two sections of approx. 30 questions on a single academic and/or policy concern within Europe*



## ROTATING MODULES ARE SELECTED FOR EACH ROUND

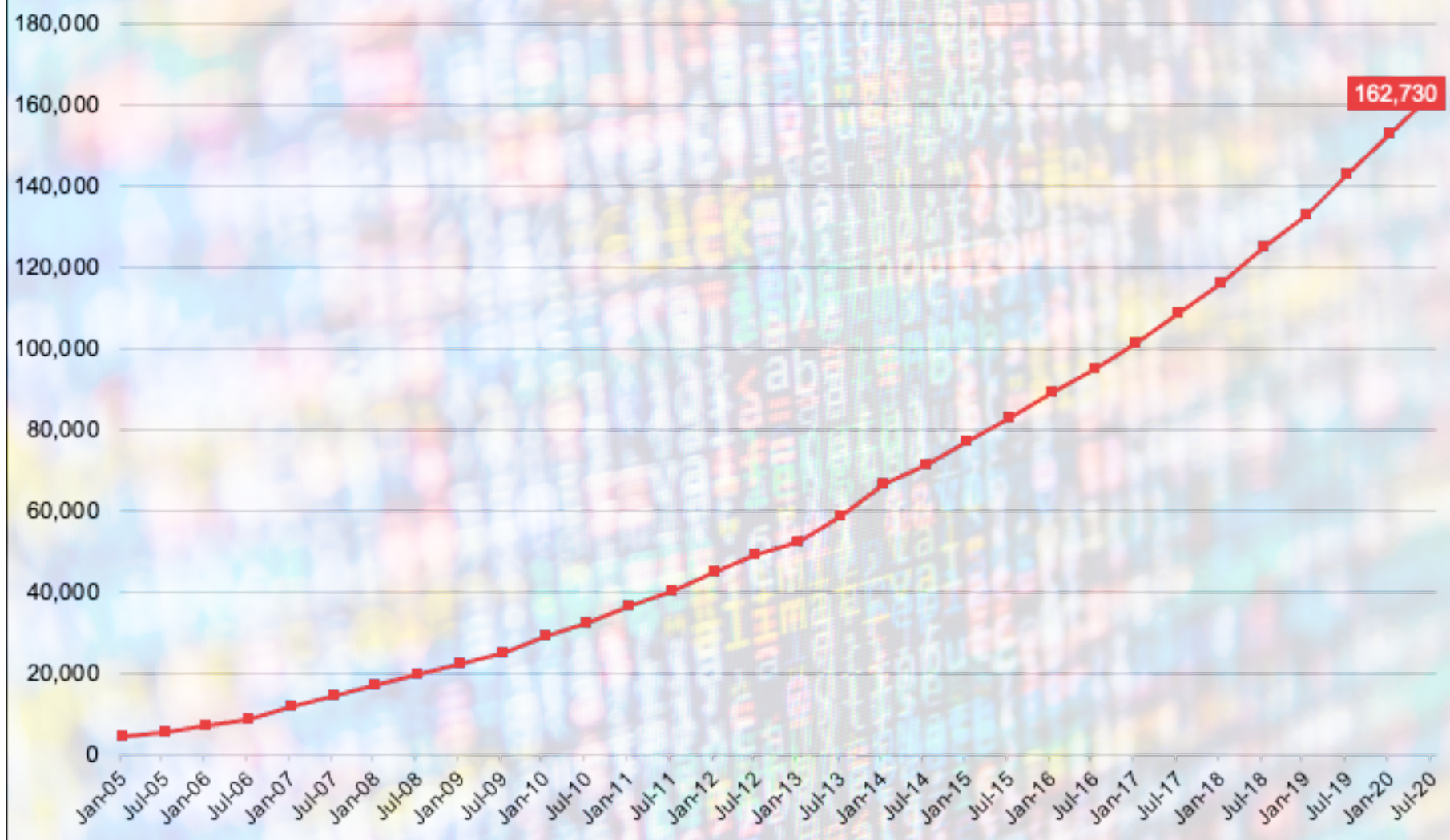


# Academic, non-academic and teaching impact

## **Monitoring Impact in the ESS – how do we do that**

- **User figures – accessing ESS data (ESS data archive – updated quarterly)**
- **Publication data (google scholar – updated annually)**
- **Impact Assessment Study (Technopolis – 2017, repeat in 2021)**
- **REF impact case study (UK university monitoring – every 8 years)**
- **Media (media monitoring)**

## Registered users (2005-20)



## Registered users: Academic affiliation

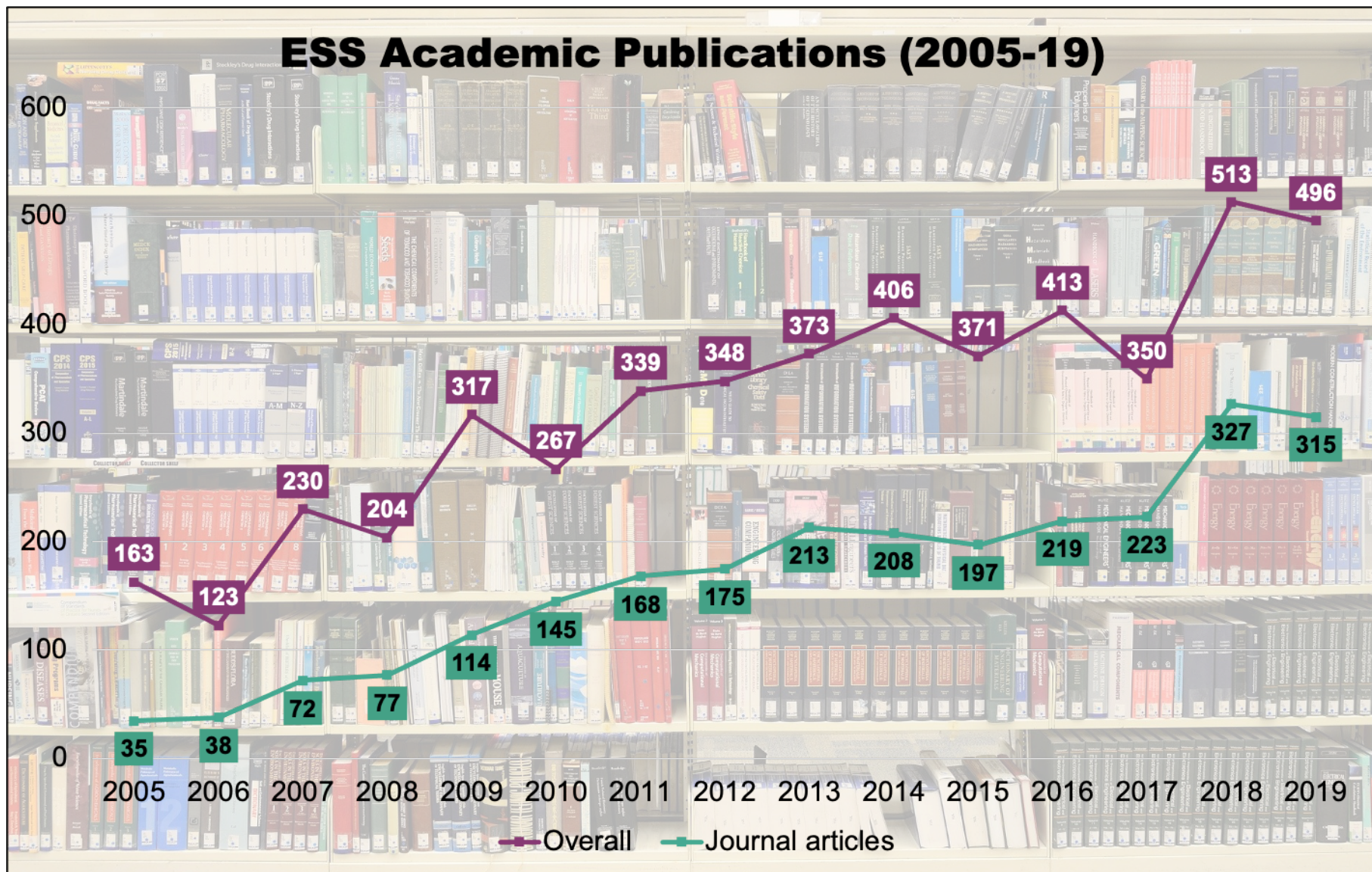
RANK	INSTITUTION	COUNTRY	COUNT
1	Universiteit Antwerpen	BE	2,744
2	University of Ljubljana	SI	1,853
3	KU Leuven	BE	1,242
4	University of Amsterdam	NL	1,213
5	University of Bergen	NO	942
6	Sciences Po	FR	876
7	ULG	BE	654
8	NTNU	NO	654
9	University of Vienna	AT	644
10	NRU HSE	RU	582
11	UCD	IE	535
12	Uni. Pompeu Fabra	ES	531
13	Bocconi University	IT	530
14	Warsaw School of Econ.	PL	525
15	University of Mannheim	DE	522

RANK	INSTITUTION	COUNTRY	COUNT
16	HINT	NO	516
17	Uni. of Copenhagen	DK	508
18	University of Helsinki	FI	501
19	University of Tartu	EE	475
20	LSE	GB	465
21	University of Geneva	CH	392
22	Aarhus University	DK	388
23	Radboud Uni. Nijmegen	NL	355
24	ISCTE	PT	351
25	University of Oslo	NO	313
26	University of Exeter	GB	297
27	University of Turku	FI	292
28	Uni. of Duisburg-Essen	DE	291
29	University of Lausanne	CH	279
30	University of Oxford	GB	271

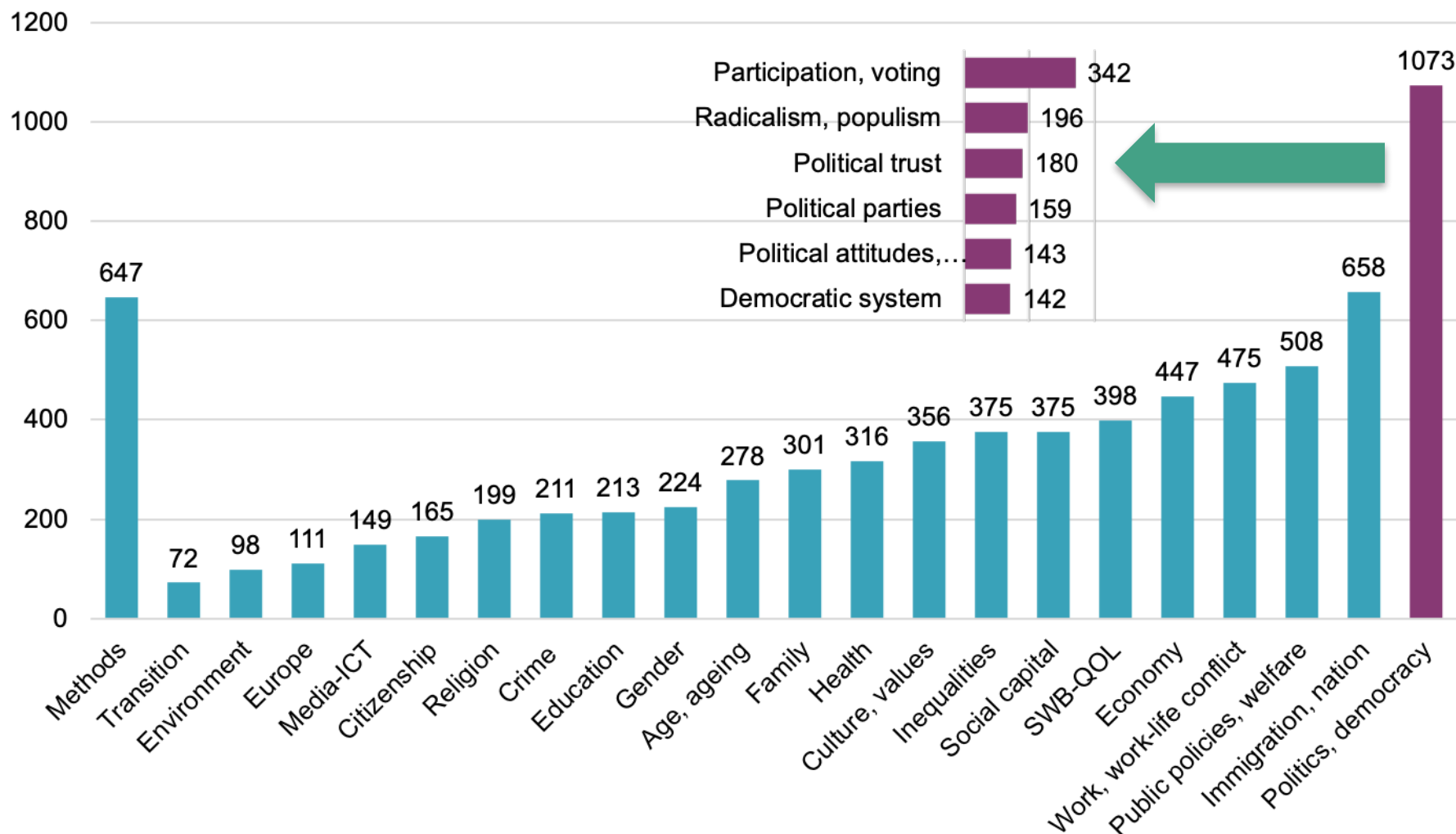
Technopolis Group (UK) 2017



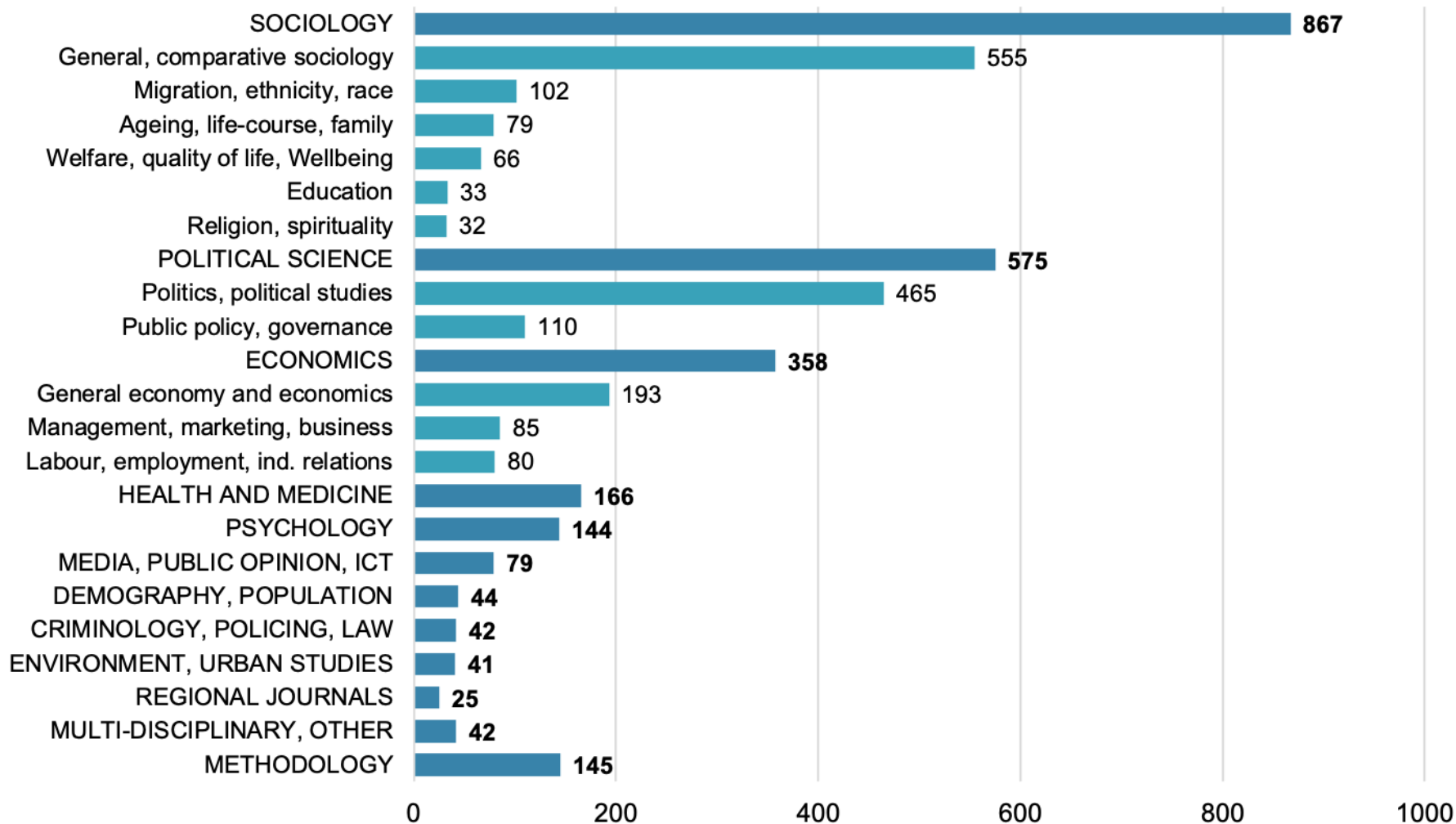
## ESS Academic Publications (2005-19)



## Publication by topic (2003-19, N=4913)



## Journal disciplinary field (2003-19, N=2527)





## Academic impact – headline bibliometric indicators

Number of Web of Science listed publications	817
<b>Mean normalised citation score (MNCS)</b>	<b>1.79</b>
<b>% top 10% publications</b>	<b>22%</b>
<b>% international collaborations</b>	<b>25%</b>

Source: CWTS, 2016

# Policy impact

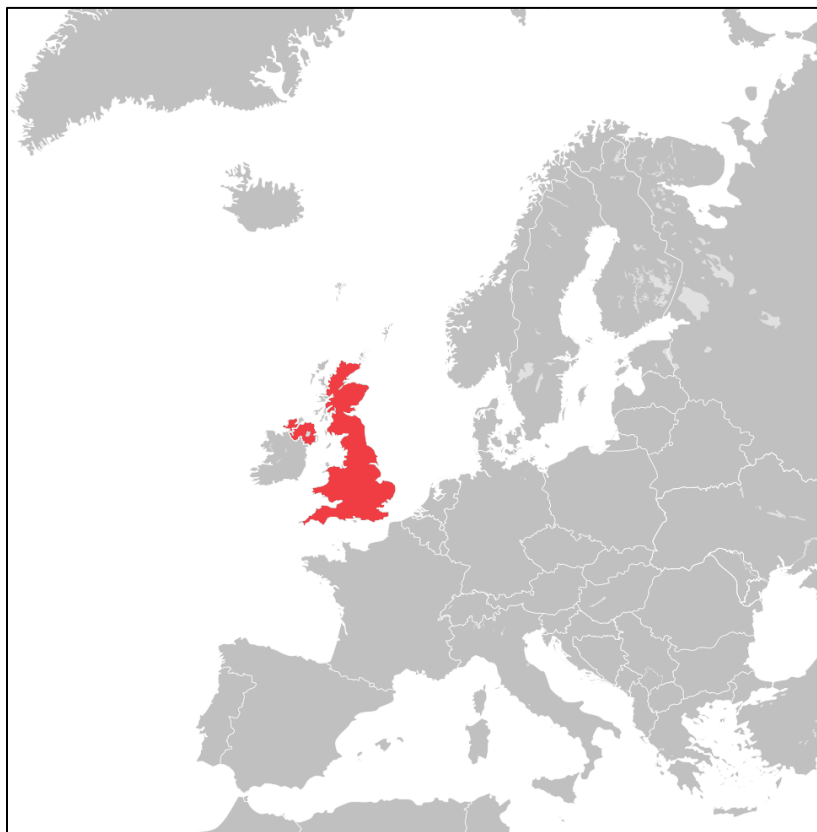
## European Social Survey: Policy impact

### Use of ESS data by France Stratégie

- An independent think tank reporting to Prime Minister's Office
- Data analysed to inform policy in the French Prime Minister's office
- Survey data measuring: happiness and life satisfaction; depression; mental health and wellbeing; trust in the police; inequalities (2008-16)
- Reports led to widespread media coverage and the newspaper - *Le Monde* - hosted a debate on inequality (2016).



## European Social Survey: Policy impact



### Helping to create wellbeing indicators in the UK

- National wellbeing indicators developed from ESS items by New Economics Foundation (NEF) and What Works Wellbeing Centre
- Office for National Statistics (ONS) and UK Government Cabinet Office now use ESS wellbeing measures
- Since 2009, at least 15 ONS publications on wellbeing have made direct reference to the ESS.

## European Social Survey: Policy impact



### ESS for Justice - using ESS data in the training of Portuguese judges

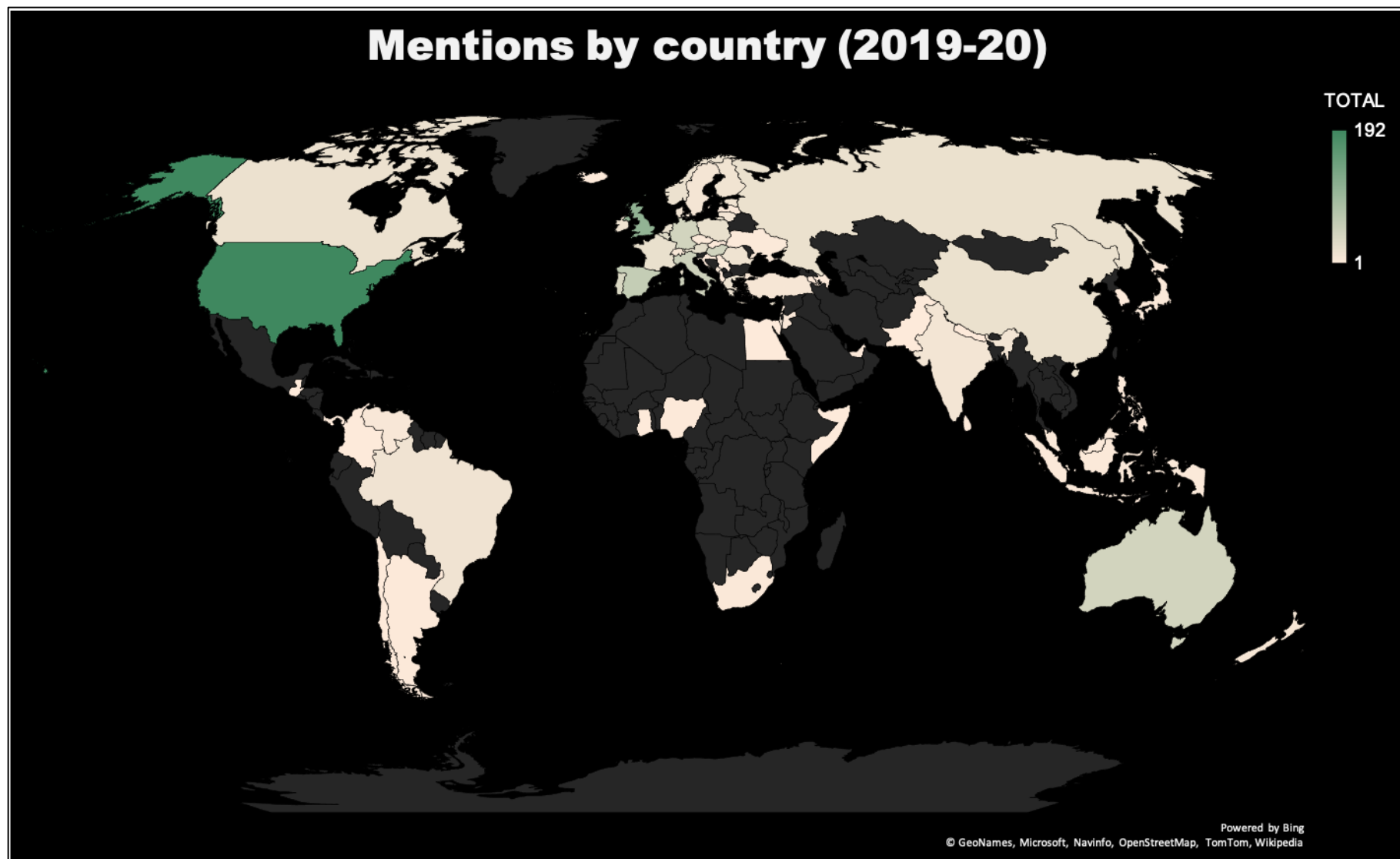
- Centre for Judicial Studies is responsible for ongoing training of judges and public prosecutors
- Data on the evaluation of justice and trust in judicial institutions on the curriculum for future judges
- Used as a tool to better understand the weaknesses and strong points of the judiciary
- Public perceptions of judges and prosecutors has improved since ESS data was considered

# 2019-20 Annual Media Monitoring Report

## **2019-20 Annual Media Monitoring Report**

- **1 June 2019 - 31 May 2020**
- **1,039 mentions of ‘European Social Survey’**
- **This includes: traditional media organizations; online media organizations; research institutes and government**
- **This does not include: academic articles**
- **268 articles published by globally or nationally recognisable media brands with large audiences**

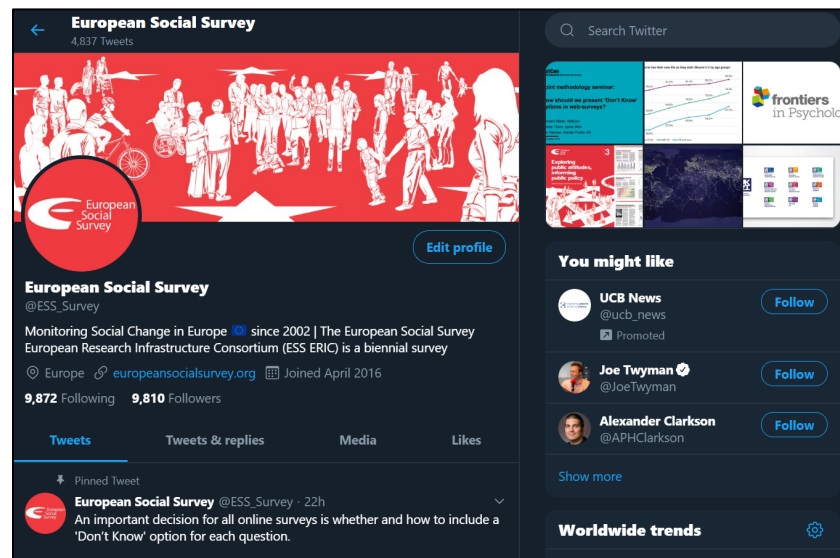
## Mentions by country (2019-20)





## Twitter (@ESS\_Survey): 2019/20

- **Posts: 706 (59 per month)**
- **Impressions: 2,076,000 (173,000)**
- **Profile visits: 24,112 (2,009)**
- **Mentions: 2,335 (195)**
- **New followers: 3,354 (280)**



## **Methods impact**

- **ESS data is used for methods research (publications)**
- **ESS methods have influenced other survey programmes (eg SHARE, EQLS at Eurofound, Fundamental Rights Agency – FRA)**
- **ESS conducting cutting edge research (new fieldwork methods)**



## Contact

✉ [r.fitzgerald@city.ac.uk](mailto:r.fitzgerald@city.ac.uk)

🌐 [europeansocialsurvey.org](http://europeansocialsurvey.org)

📘 EuropeanSocialSurvey  
in European-Social-Survey

🐦 ESS\_Survey

📺 EuropeanSocialSurveyERIC

